

300 Greenbryre Crescent



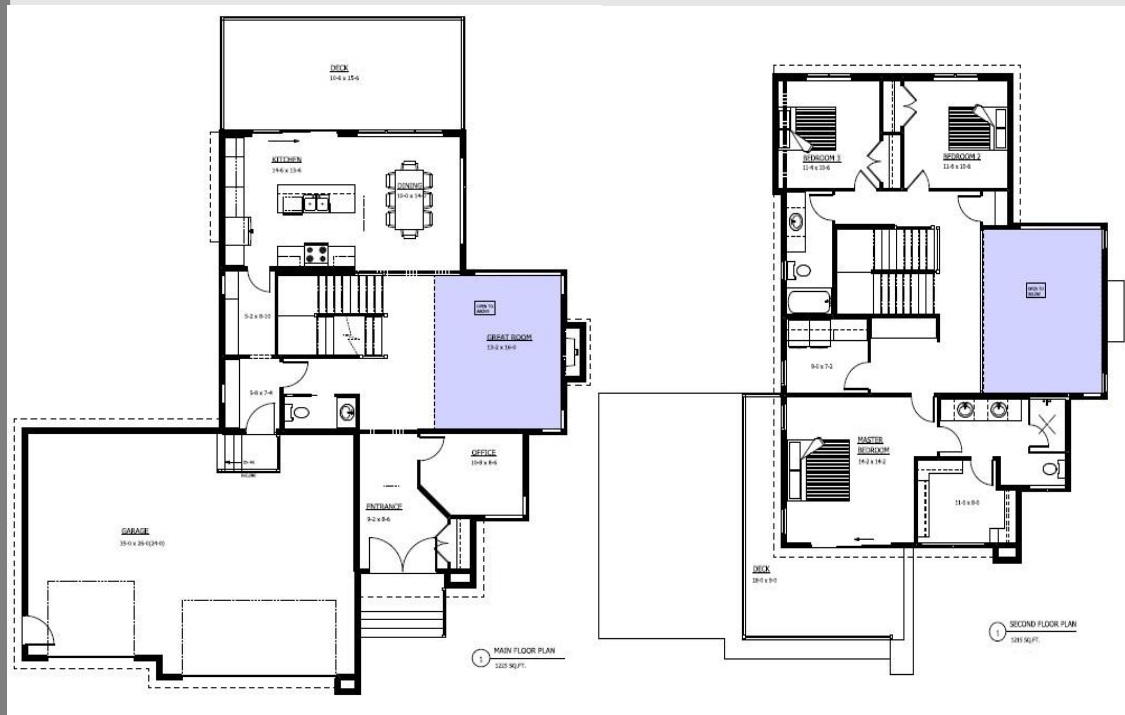
STARS[®]
LOTTERY

3,422 SQ. FT
Walkout

4 Bedroom 3.5 Bathroom
+Office

HOME FEATURES

- ❖ NORTH FACING BACKYARD
- ❖ MODERN CONTEMPORARY LOOK
- ❖ STUCCO W/ STONE & WOOD ACCENTS
- ❖ QUARTZ COUNTERTOPS
- ❖ 10' CEILING ON MAIN, WALKOUT 9' BASEMENT
- ❖ HARDWOOD FLOORING THROUGHOUT MAIN
- ❖ TILE BATHROOMS & FOYER
- ❖ 2ND FLOOR LAUNDRY
- ❖ CUSTOM SHOWER IN MASTER
- ❖ CARPET IN BEDROOMS
- ❖ FIREPLACE IN GREAT ROOM
- ❖ OPEN FROM UPPER FLOOR TO SPACIOUS GREAT ROOM
- ❖ PRIVATE DECK OFF THE MASTER BEDROOM WITH A STUNNING GOLF COURSE VIEW
- ❖ 868 SQ FT, 3 CAR GARAGE
- ❖ COMPLETED BASEMENT SET UP FOR ENTERTAINING



This highlight sheet is deemed correct but is not guaranteed



306.374.4774

www.dshomes.ca